

SAPPORO Japan

# APRES SKI



## THE ONLY CITY IN THE WORLD

DAY PLAN  
NIGHT PLAN  
ENJOY

English

# POWDER

SAPPORO Japan

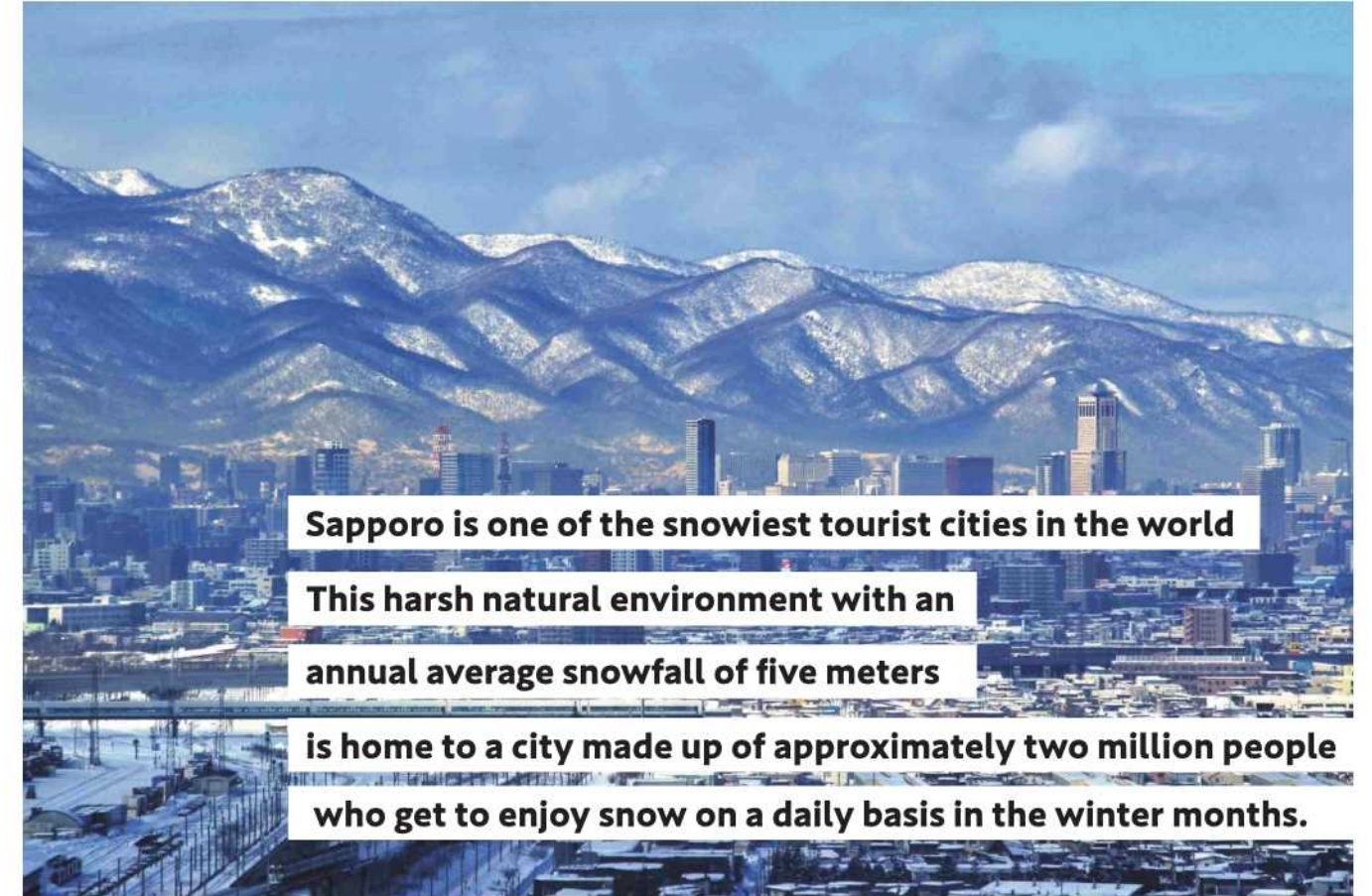
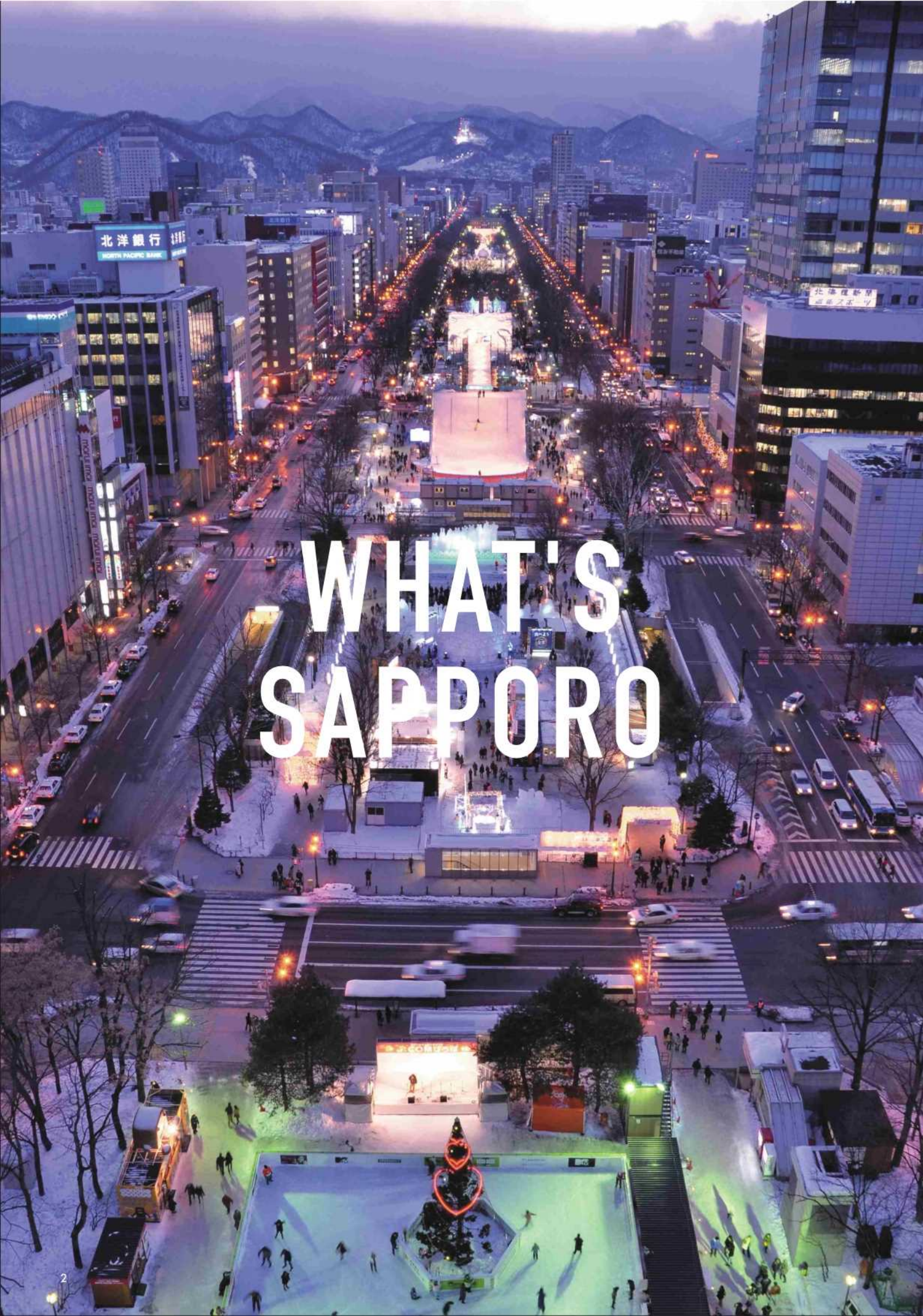
IN THE CITY

## THE ONLY CITY IN THE WORLD

WHAT'S SAPPORO  
OLYMPIC LEGACY  
SKI AREA MAP  
LOCAL TALK  
APRES SKI

English





**Sapporo is one of the snowiest tourist cities in the world**

**This harsh natural environment with an annual average snowfall of five meters**

**is home to a city made up of approximately two million people who get to enjoy snow on a daily basis in the winter months.**



The first snowfall is generally in late October or early November. Snow cover builds up between early and late December and the city is adorned with a silvery snowscape. The impact on daily life is limited by excellent snow control measures such as snow removal. Sapporo and its natural environment are closely entwined, making it possible to thoroughly enjoy winter in the city.

## About Climate History

With a population of around two million, Sapporo is the fifth largest metropolis in Japan.

It is the most important city in Hokkaido, and a place where visitors can look forward to all kinds of fun, including shopping, dining and entertainment. Sapporo is characterized by the harmony it has created between urban functions and nature, and visitors can experience magnificent natural scenery while staying in a big city.

The climate is cool and refreshing in summer, and is characterized by snow cover and freezing temperatures in winter.

The average annual snowfall is about five meters, and it snows more than 120 days out of the year. It is rare to find a metropolis like this in such a snowy area.

Asia's first Winter Olympics were held here in 1972.

The Sapporo Snow Festival, which started in 1950, has become a global event that attracts more than two million visitors.





# SAPPORO OLYMPIC LEGACY

The city where the first Winter Olympics in Asia were held in 1972  
The Olympic city of Sapporo



Top: Makomanai Speed Skating Rink, where the closing ceremony and speed skating events were held.  
Center: You can find out more about Sapporo 1972 in the Olympic Museum next to Okurayama Ski Jump Stadium.  
Bottom: Okurayama Ski Jump Stadium, an actual Olympic venue

## The Sapporo Olympics (the 11th Olympic Winter Games)

The first Winter Olympics to be held in Asia lasted for 11 days, from February 3 to 13, 1972. 1,128 athletes from 35 countries participated in the games. Some of the venues still remain and can be used by residents and tourists. From the Okurayama Ski Jump Stadium, where the ski jumping events were held, visitors can survey the city of Sapporo from a ski jumper's perspective. The adjacent Olympic Museum tells the history of the Winter Olympics. The Olympic cauldron is still in place at the Sapporo Teine ski ground, where the alpine events were held, and visitors can actually ski courses that were used in the Olympic Games.

## SAPPORO CITY MAP

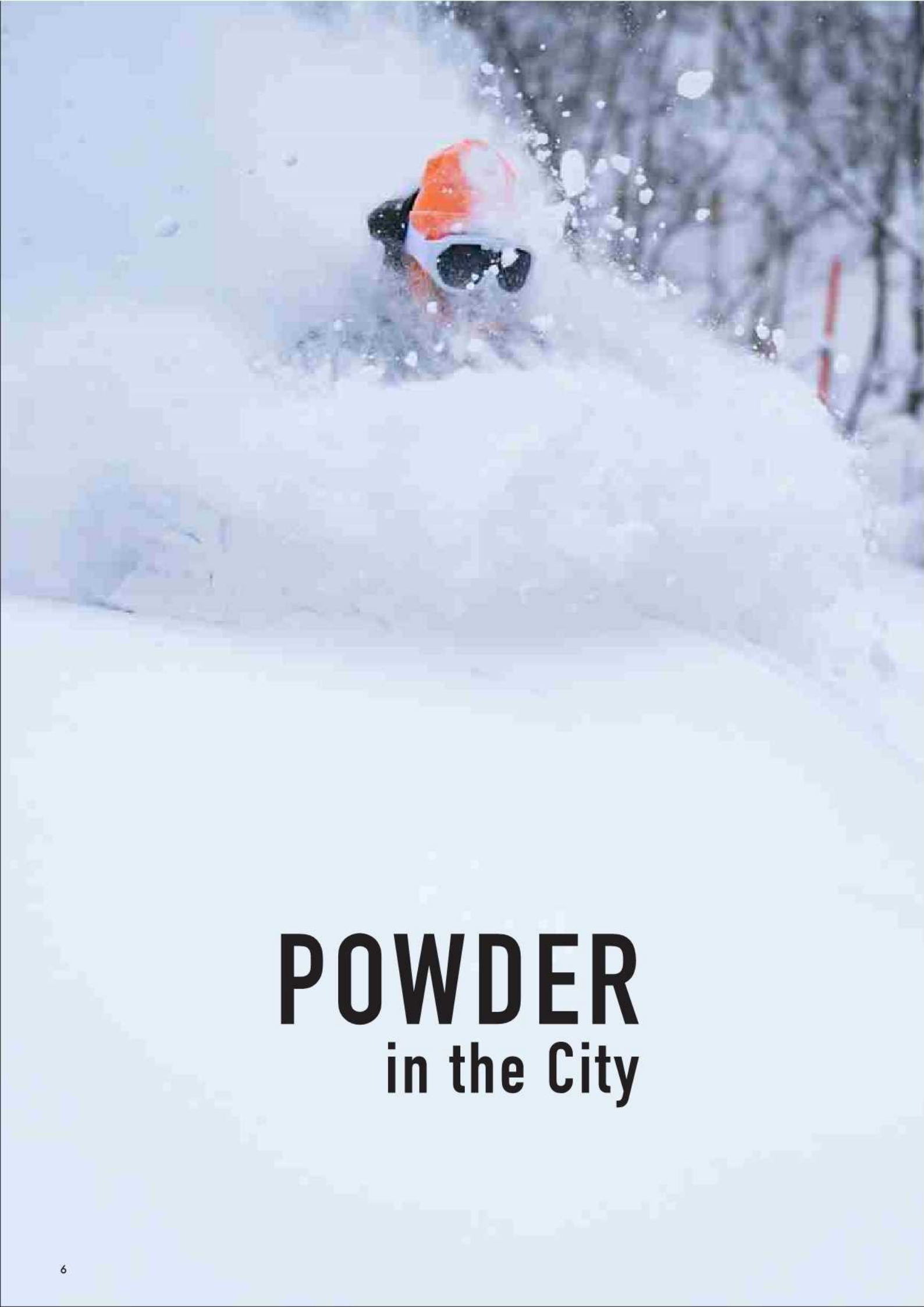
### Ski grounds in Sapporo

In Sapporo, there are six ski grounds that can be enjoyed by not only advanced skiers but also beginners, and by those who simply want to play around in the snow. All those ski grounds are within an hour's drive of the city center, allowing visitors to enjoy both urban tourism and skiing.



- 1 Sapporo Teine
- 2 Sapporo Kokusai Ski Resort
- 3 Sapporo Bankei Ski Area
- 4 Sapporo Moiwayama Ski Area
- 5 Fu's Snow Area
- 6 Takino Snow World





# POWDER in the City

**Experience the miracle powder snow  
unique to the metropolis of Sapporo**

## SNOW RESORT CITY



### **A rare tourist city blessed with a climate and location that brings plenty of snow**

There are few big cities that get as much snow as Sapporo. Sapporo's winter snowfall is close to 5 meters, but other snowy metropolises such as Montreal in Canada and St. Petersburg in Russia get less than 3 meters. This goes to show just how much snow Sapporo gets. The snowfall can cause quite a few problems in daily life. However, having this much snow means that skiing and snowboarding are an everyday pleasure in winter, and world-famous events such as the Sapporo Snow Festival can be held. It also enabled the city to meet the various requirements and host the first Winter Olympics to be held in Asia. It is rare for a big city to have this much snow, and for that snow to be so light that it flies up when blown upon. The mechanism behind this is that cold, dry air blown from Siberia is supplied with water vapor when crossing the warm Sea of Japan and snow clouds are

formed. These develop further when they reach Hokkaido and are forced to ascend by mountain ranges and the like, leading to heavy snowfall along the Sea of Japan coast. This cycle occurs frequently during the coldest part of the year, which is why Sapporo is blessed with an environment where fresh snow falls abundantly. If you spend three days in Sapporo, you will probably be able to enjoy such delights as gliding across powder snow while gazing upon the city nightscape or the sea, and weaving your way through the woods as you ski a tree run. Sapporo is so convenient that you can be in a ski ground after driving between 30 minutes and an hour from the city center. You could search the whole wide world and never find another powder snow city where the geographical and climate conditions are such a good match. Its very existence is a miracle.

### **Why Sapporo is a “miracle city”**



#### **Natural snow**

There are ski grounds covered with natural snow within just an hour's drive of the city center where you can ski and snowboard for about half of the year from November to May.



#### **Night powder snow**

The ski grounds, which can be reached in as little as 30 minutes from the city center, are also open at night, allowing visitors to take in the night view while having fun in the night powder snow.



#### **Sea views**

There are few ski grounds in the world that are close to the city center and afford sea views from powder snow slopes. Sapporo offers such delights on a daily basis.





Enjoy the view of the metropolis and sea as you glide over the snow

# SAPPORO TEINE

DATA

Teine-Honcho 593, Teine-ku, Sapporo 006-0029, Japan  
☎011-682-6000  
<https://sapporo-teine.com/snow/>



Top elevation: 1023m  
Elevation difference: 683m  
Base elevation: 340m

Gondola Night skiing Rental

Lessons (foreign languages available)

About 40 min from Sapporo city center

About 16 min by the JR Hokkaido Bus service from JR Teine Station

@sapporo.teine

@teine1024

@sapporo\_teine\_official

@TEINE CHANNEL- Sapporo Teine koshiki-



The 1.5 km course is ideal for beginners, and can also be used by run bikes. It is the longest run bike course in Japan.



There can be more than four meters of snow cover at the peak of the season, so you can experience the very best powder snow.

## Olympic Legacy



Sapporo Teine was the first Winter Olympic venue in Asia, and hosted the alpine skiing men's and women's slalom and giant slalom, and the bobsleigh and luge events. The Women's Giant Slalom and the Men's and Women's Slalom are still used as course names, and places such as the Olympic Cauldron remind us of the Sapporo 1972 legacy.

Sapporo Teine was a 1972 Winter Olympic venue, and hosted the men's and women's alpine skiing slalom and giant slalom, and the bobsleigh and luge events. The ski ground is divided into two areas: the Highland Zone and the Olympia Zone. The Highland Zone extends from the summit of Mt. Teine (altitude 1,000m). It is amazing to be able to glide across the snow while looking down at the Sapporo cityscape and Ishikari Bay. This is the only place where you can enjoy such an experience. Many of the courses are intermediate or advanced level, and the Highland Zone is characterized by courses that are well-known throughout Japan, such as the alpine skiing Women's Giant Slalom course, and KITAKABE (North Face), a wooded slope that snow groomers cannot enter. Beginners can take the ropeway or chair lift to the summit and enjoy the view while gliding down the nearly 6,000m gentle slope. The Olympia Zone, in contrast, has more slopes that are suitable for families. In addition to the SHIRAKABA Sun Shine beginner's course, which has an average gradient of 13 degrees, it offers a kids' park and snow attractions. Despite being a mere 15 km from the city center, it gets so much snow that in most years the ski season extends until early May. Furthermore, many skiers and snowboarders frequently visit this ski ground due to its thick cover of excellent powder snow.





**Just an hour from the city center,  
you can enjoy natural snow as much as 5 meters  
deep from November to May**

# Sapporo Kokusai Ski Resort

## DATA

Jozankei 937, Minami-ku, Sapporo 061-2301, Japan  
☎011-598-4511  
<https://www.sapporo-kokusai.jp/>



Top elevation: 1100m

Elevation difference: 470m

Base elevation: 630m



Gondola Rental Lessons (in Japanese or English)



About 60 min from Sapporo city center



90 min from No. 17 bus stop at  
Sapporo Station Bus Terminal



@sapporokokusai



@sapporo\_KOKUSAI



@sapporo\_kokusai



@sapporokokusai

SAPPORO  
6 SKI AREA

02

SAPPORO  
KOKUSAI



**A winter resort to revel in the great outdoors**



**Magical groves of frost-covered trees can be seen on cold days**

## Relax and unwind in a hot spring after skiing



Jozankei Onsen is a famous Hokkaido hot spring. Located a roughly 30-minute drive from Sapporo Kokusai Ski Resort, it welcomes day-trippers who want to enjoy a hot spring bath, as well as offering overnight accommodation. Jozankei Onsen is the perfect place to warm your chilled bones and soak away your fatigue.

Sapporo Kokusai Ski Resort is located about an hour's drive from downtown Sapporo, and has some of the best powder snow and most magnificent ski slopes in Hokkaido. It has the longest season of the ski grounds near Sapporo, and in a normal year you can enjoy winter sports here from mid-November to early May. The ski ground is centered around the eight-seater cable car which runs from the foot of the mountain to its summit, and a total of seven trails spread out across the mountainside. The shortest trail is 1 km, and the Forest Trail and Märchen Trail, two beginners' courses that combine to form a 3.6km course, are an exhilarating ski experience. The advanced Downhill Trail is a 2.2 km course where you can enjoy the thrill of skiing down steep slopes on uncompressed powder snow. The 360-degree panoramic view from the summit is another of Sapporo Kokusai Ski Resort's attractions. The fact that many skiers and snowboarders come to use this ski ground from Sapporo, Otaru and the surrounding areas is a testament to just how good it is. You need have no fears even if it is your first time to ski or snowboard since there is also a gentle slope with a snow escalator where you can have fun. There are hot springs on the way back to Sapporo, such as Jozankei Onsen and Koganeyu Onsen, and there are popular package tours that include skiing and a hot spring.





When the snow falls, a golden opportunity to experience powder snow in the heart of the city

# Sapporo Bankei Ski Area

DATA

Bankei 410, Chuo-ku, Sapporo 064-0945, Japan  
☎011-641-0071  
<https://www.bankei.co.jp/>



Top elevation: 482m  
Elevation difference: 207m  
Base elevation: 275m



Night skiing



Rental



Lessons (foreign languages available)



About 20 min from Sapporo city center



About 15 min from Maruyama koen subway station on the Tozai Line



@sapporo\_bankei



@sapporo\_bankei\_skiarea



Waku Waku Snowland has an escalator



The half-pipe meets international standards

## A ski ground with a superb transport network



As a ski ground located in Chuo-ku in the heart of Sapporo, the access is excellent. The bus network is particularly good. Bankei Bus has a handy app you can use on your computer or smartphone to check the bus service status or show the nearest bus stop on the map. There is also free parking with room for 1,000 cars, and taxi packs are available that offer deals such as transport by taxi and a lift pass.

Sapporo Bankei Ski Area is located in Chuo-ku in the heart of Sapporo and boasts excellent snow quality and depths. It can be accessed in around 20 minutes by car from downtown Sapporo, and there is also an excellent transport network with buses to and from Maruyama koen, Makomanai, and Hassamu minami subway stations. The monitor displaying the bus service status on the Center Lodge first floor is a facility that is still rarely seen in Japan. The ski ground has a wide layout with 17 courses in all, and can be enjoyed by everyone from beginners to expert skiers. Although compact in scale, facilities such as the slalom bahn, mogul course, and Japan's biggest half-pipe boast the quality required to host international events. The FIS certified mogul course and Bankei Half Pipe were used as venues for the 2017 Sapporo Asian Winter Games. There are also plenty of easy gentle slopes for beginners and children. In particular, Waku Waku Snowland is a safe area separated from the other slopes, and is the ideal course for children and tourists to enjoy the snow for their first time. Its snow escalator makes it easy to climb the slope, and they can enjoy activities such as sledding and tubing.



Enjoy the night view of Sapporo,  
one of the New Three Most  
Beautiful Nightscapes of Japan



Around 20 minutes from the city center,  
you almost seem to be skiing right above  
its streets



You can enjoy the cityscape in the daytime and at night,  
regardless of your proficiency level

### A great ski ground with a diverse range of courses



A diverse 10-course layout that can be enjoyed by everyone, from beginner to advanced level. The only slopes in Hokkaido exclusively for skiing make this a paradise for skiers. One of the keys to its popularity is that you can enjoy skiing here at any time of day since most of the courses are suitable for night skiing. The condition of the snow and the scenery are different during the daytime and at night, so it can be fun to pay a visit at different times.

# Sapporo Moiwayama Ski Area

#### DATA

Moiwashita 1991, Minami-ku, Sapporo 005-0040, Japan  
☎011-581-0914  
<https://www.rinyu.co.jp/moiwa/>



Top elevation: 448m

Elevation difference: 173m

Base elevation: 275m



Night skiing



Rental



Lessons (foreign languages available)



About 20 min from Sapporo city center



About 6 min by the Jotetsu Bus service  
to and from Makomanai subway station on the Namboku Line



@SAPPOROMOIWAYAMASKIRESORT



@rinyu\_moiwa531



@sapporo\_moiwayama\_skiarea

SAPPORO  
6 SKI AREA

04

MOIWAYAMA

It only takes 20 minutes to access this ski ground from downtown Sapporo. Sapporo Moiwayama Ski Resort extends down the slopes of Mt. Moiwa (altitude 531 m) and is one of the few ski grounds in Japan that is exclusively for skiers. The 10 courses are divided between the north and south faces, and can be enjoyed by a wide range of proficiencies, from beginner to advanced. Next to the north face ski lodge is Nakayoshi Square, an area for sledding or playing in the snow that is also an ideal place for beginners and children to practice. The 2.6 km Kanko-doro Course is suitable for beginners and feels like a relaxed trekking experience as you look down at the Sapporo cityscape spread below. Popular with intermediate and advanced skiers are the Usagidaira Course, a mogul slope with a maximum gradient of 35 degrees, and the Dynamic Course, which makes you feel like you are plunging into the streets of Sapporo. Eight of the courses are equipped for night skiing, a great opportunity to enjoy the night view of Sapporo, one of the New Three Most Beautiful Nightscapes of Japan, as well as the skiing. They operate until 9 p.m. and attract many Sapporo citizens who come after school or work. Sapporo may be one of the best places to enjoy sightseeing in the city during the day and then the thrill of night skiing in the evening.



Night powder suddenly appears  
in a residential area

# Fu's Snow Area

## DATA

Fujino 473-1, Minami-ku, Sapporo 061-2271, Japan  
☎011-591-8111  
<https://www.fujino-yagai-sports.jp/winter>



Top elevation: 563m

Elevation difference: 250m

Base elevation: 313m



Night skiing



Rental



Lessons (foreign languages available)



About 30 min from Sapporo city center



About 30 min from Makomanai subway station on the Namboku Line



@FusSapporo



@fus\_sapporo

SAPPORO  
6 SKI AREA

05

Fu's  
snow area

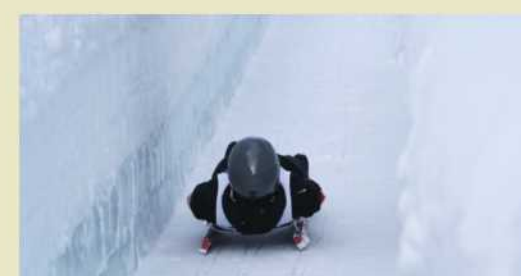


Children and adults alike can have fun on  
the snowy mountainside of the kids' slope



There are also slopes steep enough to satisfy even advanced  
skiers, so everyone can enjoy their time here, regardless of  
their level of proficiency

## Olympic legacy luge course



Luge is a winter sport where you slide down the ice facing upwards on your sled. Fu's Snow Area has one of the few luge venues in Japan. This was built as a back-up course for the 1972 Sapporo Winter Olympics, and the luge courses in Nagano Prefecture and here are the only ones in Japan at the moment. If you come when a tournament is on, you may be able to watch the competitors whizzing past like bullets.

This ski ground is located a roughly 30-minute drive south from downtown Sapporo. It has six courses and can be enjoyed by a wide range of proficiencies, from beginner to advanced. One thing that makes it particularly attractive is its reasonable prices. Four-hour passes, nighter passes and ski or snowboard set rental fees are inexpensive, so even first-time skiers or snowboarders are sure to have a great time. The slopes are laid out in a wide area from the summit to the foot of the mountain. The gradients near the summit are for advanced skiers, but become gentler nearer the foot of the mountain, making the slopes there suitable for beginner and intermediate courses. When you look down the slope, you will probably be amazed at how close the course is to a residential area. Fu's Snow Area is used by many family groups, and the slopes resound with cheerful voices. The gentle slopes at the foot of the mountain are an ideal place for first-time skiers and snowboarders to practice. Meanwhile, the two courses down from the summit have steep slopes. You can see Sapporo's Mt. Moiwa and the Bankei area mountains from the Panorama Course. The other course from the summit is the Dynamic Course, where the steepest gradient is 38 degrees. The slope is packed with moguls and attracts skiers who are proud of their skill. We recommend that people who are trying out skiing for the very first time, or who wish to improve their skills, take a private lesson, which needs to be reserved in advance.



A park where you can have fun all day,  
enjoying the snow and the world of nature!



# Takino Snow World

## DATA

Takino 247, Minami-ku, Sapporo 005-0862, Japan  
☎011-592-3333  
<https://www.takinopark.com/>



Top elevation: 260m  
Elevation difference: 30m  
Base elevation: 230m



Rental



Lessons (in Japanese)



About 50 min from Sapporo city center



About 30 min by bus from  
Makomanai subway station on the Namboku Line



@takinopark



@takino\_official



@takino.park



@Kokuei Takino Suzuran Kyuryo Koen

SAPPORO  
6 SKI AREA

06

TAKINO  
SNOW  
WORLD



Fun for all, from beginners to old hands



Winter is not only about skiing and snowboarding

## Ashiribetsu Falls



Located in the Keiryu Zone, this is one of the biggest waterfalls in the city of Sapporo and has been selected as one of the 100 Best Waterfalls in Japan. When extremely cold weather persists in mid-January, the spray from the waterfall freezes to create a natural phenomenon known as an "icefall." On mornings when the weather is fine, you can observe the mystical sight of this waterfall sparkling in the sunlight.

Takino Suzuran Hillside Park is located amidst the natural beauty of the Minami-ku Sapporo backcountry. When the snowy season starts, it changes its name to Takino Snow World and becomes a silvery-white paradise. The 250 m gentle family slopes, with an average gradient of 7 degrees, are ideal for ski or snowboard beginners and young children. The most popular slope is the sledding hill, which is one of the longest courses in Japan. It is tremendously thrilling to slide on a tube sled non-stop down the 200 m course, and the free rope tow means you can reach the starting point really easily, making this an attraction that delights children and adults alike. Children who are still too young to ski or tube sled will have fun playing in the fluffy snow of the Takino no Mori Zone and perhaps sliding along on their bottoms. Takino Snow World also has six cross-country ski courses of various levels of difficulty, ranging from a gently-sloped course you can stroll around to a full-blown course with lots of ups and downs. There are a great opportunity to enjoy winter scenery such as snowy woods while working up a good sweat. Snowshoeing is an activity unique to snowy regions. You can walk on fresh snow untrodden by anyone else, and sometimes come across animal tracks in the snow or birds perched in the trees. We recommend the Winter Woods Guided Walk, which is offered by volunteer guides and will make your experience even more enjoyable.



# 01 Akira Sasaki

"A natural environment nurtured by the fertile earth and ocean"



Photo: Sapporo Kokusai Ski Resort

## Q. What makes Sapporo in winter so appealing?

A.Sapporo is a city with a population of two million, and is very close to both the mountains and the sea. World-class foodstuffs are nurtured by the fertile Hokkaido soil and oceans. You can enjoy its natural beauty all year round, and on top of that it boasts a winter environment with global appeal thanks to its abundance of the snow most needed by skiers. Several ski grounds are clustered around Sapporo, a roughly 30-minute drive from the city center. Each ski ground has its own special character so there are many different ways to have fun. One thing that makes Sapporo hugely attractive is that you can choose a location based on the day's conditions, and on the slope gradient and skiing style you fancy. I don't think there are many other places in the world where you can enjoy a night-view of the city while you ski.

## Q. Which ski ground do you like?

### A.Sapporo Kokusai Ski Resort

It's hard to narrow it down to just one, but a strong contender would be Sapporo Kokusai Ski Resort where I often go. I like it because the layout has a comparatively large number of gentle slopes on wide trails, so this is a place I can take family members and beginners as well. And most importantly of all, the quality of the snow is excellent.

## Q. Can you recommend somewhere to eat, or where non-skiers can enjoy?

### A.Thumbs up COFFEE STAND

I always want something sweet after I've been skiing. This shop is near Teine, and I love its coffee, handmade donuts and soft serve ice cream made using raw milk from North Plain Farm in Okoppe-cho. Thumbs up is a place I can really relax before heading off to the mountains or the sea, or before engaging in some kind of activity.



## Q. Where would you recommend a visit in Sapporo in winter?

### A.Hokkaido Shrine

This is a Shinto shrine. It inspires a solemn mood even when there's no snow, but it feels particularly sacred when blanketed with pure white snow. The path leading straight to the main shrine from the torii gate always focuses my mind and is a great place for a walk.

## PROFILE



Born in the city of Hokuto, Hokkaido in 1981. Has stood on the Alpine Ski World Cup winner's podium three times, the Japanese record, and competed in four Olympics in a row. As a professional skier, he draws upon his experience of ski grounds around the world to convey the wonders of snow.

<https://vimeo.com/ondemand/twinpeaks>  
@akiraexploring

# Neil Hartmann 02

"Excellent snow removal, and easy access to nearby resorts"



Photo: Sapporo Kokusai Ski Resort

## Q. What makes Sapporo in winter so appealing?

A.The snow can sometimes make life difficult, but at the same time it's very beautiful and connects us more strongly with nature. I think that everyone who lives in Sapporo feels this sense of gratitude towards nature. There are various winter events and festivals, such as the Sapporo Snow Festival, where we can feel the appeal of the snow. And it's good to have mountains nearby as well. Six ski grounds can be easily reached from Sapporo, and there are

countless backcountry access points. After skiing, you can return to the city and enjoy top-class food and entertainment. This brilliant combination is extremely rare anywhere in the world. And the snow removal technologies are top-level. Sapporo is one of the snowiest metropolises in the world, but it has excellent technologies to remove snow from its roads, so you can access nearby resort areas without having to worry about the road conditions.

## Q. Can you recommend somewhere to eat, or where non-skiers can enjoy?

### A.Hoheikyo-Onsen curry and Fujino coffee

I often want to eat curry on my way home from snowboarding. There's a restaurant in Hoheikyo-Onsen where you can enjoy amazing curry and nan made by a Nepalese cook. Sapporo also has a well-established coffee culture, and there are many cafes with great quality coffee and a relaxed atmosphere. I particularly like STAN-DARD COFFEE LAB. in Fujino.

## Q. Where would you recommend a visit in Sapporo in winter?

### A.Places to enjoy the nightscapes

The metropolis is home to two million citizens, and the night view of it covered in a deep blanket of snow is absolutely spectacular. The first place I want to introduce is the summit of Mt. Moiwa. You can access it via ropeway and cable car, and there's a magnificent panorama of the city spread out below. The second is Okurayama Ski Jump Stadium. Take the pair lift up to the summit and experience the sheer scale of the large hill jump ramp that seems to plunge into the city. The third is the JR TOWER shopping mall, which is directly connected to Sapporo Station. From the observatory on the 38th floor, you can gaze out upon the brilliant city center nightscape and watch the trains come and go in Sapporo Station.



## PROFILE



Born in America in 1972. After working in jobs such as a television MC and radio DJ, he is now active as a filmmaker who does the whole process from shooting to editing, and a photographer. He loves snowboarding and skiing, and his snowboarding movie Car Danchi is a big hit in Japan.

@neilhartmann  
@Neil Hartmann



# 03 Takeshi Kodama

"I'd like people to immerse themselves in the Sapporo nightscape experience while night skiing at Sapporo Moiwayama Ski Area"



Photo:Sapporo Teine

## Q. What makes Sapporo in winter so appealing?

A.For a start, there are plenty of events that enable us to enjoy the winter.The impressive quality and presentation of the snow sculptures at the Sapporo Snow Festival get better and better every year.Spots like Takino Suzuran Hillside Park, which holds many events to experience the joy of snow, are places where you can experience the Sapporo winter and its bountiful snow.Another great thing is that the ski grounds are full of character and close to the city.You can experience an urban-style ski trip during your stay here, enjoying the skiing and also sightseeing and shopping.If you stay in the downtown area you can indulge in the winter grand slam in a single day(skiing, a hot spring, good food, then the nightlife).In particular, superb food showcasing Hokkaido produce is a major Sapporo attraction.

## Q. Which ski ground do you like?

A.Sapporo Teine

I've been coming to this ski ground since I was a child but I never get tired

of the richly varied courses.You can enjoy a superb view from the summit of Ishikari Bay, the Sapporo cityscape, the Shokanbetsu mountain range, and the Daisetsusan Volcanic Group.Another thing I like is that it has excellent quality snow since its altitude is relatively high and there are many north-facing slopes.

## Q. Can you recommend somewhere to eat, or where non-skiers can enjoy?

A.Moerenuma Park.

Moerenuma Park was designed by the world-famous sculptor Isamu Noguchi.Visitors can try strolling around the park in snowshoes or cross-country skis, or sledding down Mt. Moere in the park, so they're bound to have fun even if they don't ski.



## Q. Where would you recommend a visit in Sapporo in winter?

A.Night skiing at Sapporo Moiwayama Ski Area

The night skiing at Sapporo Moiwayama Ski Area is always thrilling as you almost seem to plunge into the Sapporo nightscape, selected as one of the New Three Most Beautiful Nightscapes of Japan. Just going up on the ropeway to enjoy the view is fun, but I'd like people who can ski to immerse themselves in the Sapporo nightscape experience.

### PROFILE



Born in the city of Sapporo, Hokkaido in 1974. Summited Mt. Everest in 2005.Starting with a ski descent from the summit of Mt. Denali (Mount McKinley), he is creating a series of photobooks where he visits mountains around the world, in places such as India, China, Morocco, Greece and Lebanon.

@skiertake0728  
@takeshi.kodama.735

# Yoko Nakamura 04

"We can enjoy natural snow for a long period of time, from December to early May"



Photo:Sapporo Teine

## Q. What makes Sapporo in winter so appealing?

A.Even though it's a big city with a population of around two million, we have mountains and the sea within a one-hour radius.There aren't many cities in the world that are as surrounded by nature.Snow covers the city in winter, and we can enjoy natural snow for a long period of time, from December to early May.Also, Hokkaido is a cornucopia of food, with a self-sufficiency rate of over 200%. Sapporo is the heart of Hokkaido, and it gathers together delicious agricul-

tural produce, seafood and dairy products from throughout the region. There are countless delicious restaurants in Sapporo that bring out the best in Hokkaido produce.

## Q. Can you recommend somewhere to eat, or where non-skiers can enjoy?

A.Karabato Curry and SPACE1-15 (SPACE ichi ichigo)

Karabato Curry is landmarked by a sign saying "Will you go all the way? This is the authentic flavor." You'll find it on the way back to the city center from Sapporo Kokusai Ski Resort via Jozankei.The only thing on the menu is the Pakistani curry set(with salad and chai).The refreshing vinegary marinade salad and spicy curry simmered until the chicken is flaking apart are so delicious they're addictive.And there's a nice relaxing cup of chai after the meal.I recommend this restaurant as a place you'll want to drop by after enjoying the snow.SPACE1-15 (SPACE ichi ichigo) is located in an old 5-story apartment building in the Maruyama area, and consists of various shops that each rent a room and are mainly open

at the end of the week from Thursday to Sunday. They include cafes, kitchens, bric-a-brac and clothes shops, shops that sell by weight, shops run by handcrafters, and workshops where you can learn how to make confectioneries or jewelry.You access the building by pressing the number of the room you want to visit on the interphone, and enter a space where you can enjoy the thrill of a treasure hunt.Once you're a fan of this place, you'll want to go there again and again.

## Q. Where would you recommend a visit in Sapporo in winter?

A.Hoheikyo-Onsen

A superb free-flowing natural hot spring for day-trippers where you can soak in a spacious open-air bath while gazing at the snowy scenery.



### PROFILE



Born in the city of Sapporo, Hokkaido in 1981. Became a pro rider at the age of 24, and won a free ride event held in Alaska in 2013. She engages actively in filming trips in Japan and overseas.

@yoooran



# Apres Ski ENJOY SAPPORO

## Sapporo's winter delights



### German Christmas Market in Sapporo

Enjoy the German atmosphere here in Sapporo

This Christmas market has been held since 2002, as a celebration to honor the 30th anniversary of Sapporo's sister city relationship with Munich, Germany. In addition to rows of stalls in Odori Park selling Christmas goods and German food, there is a collaborative event with Sapporo White Illumination which is held from late November.

<https://white-illumination.jp/munich/>



### Jozankei Snow Candles

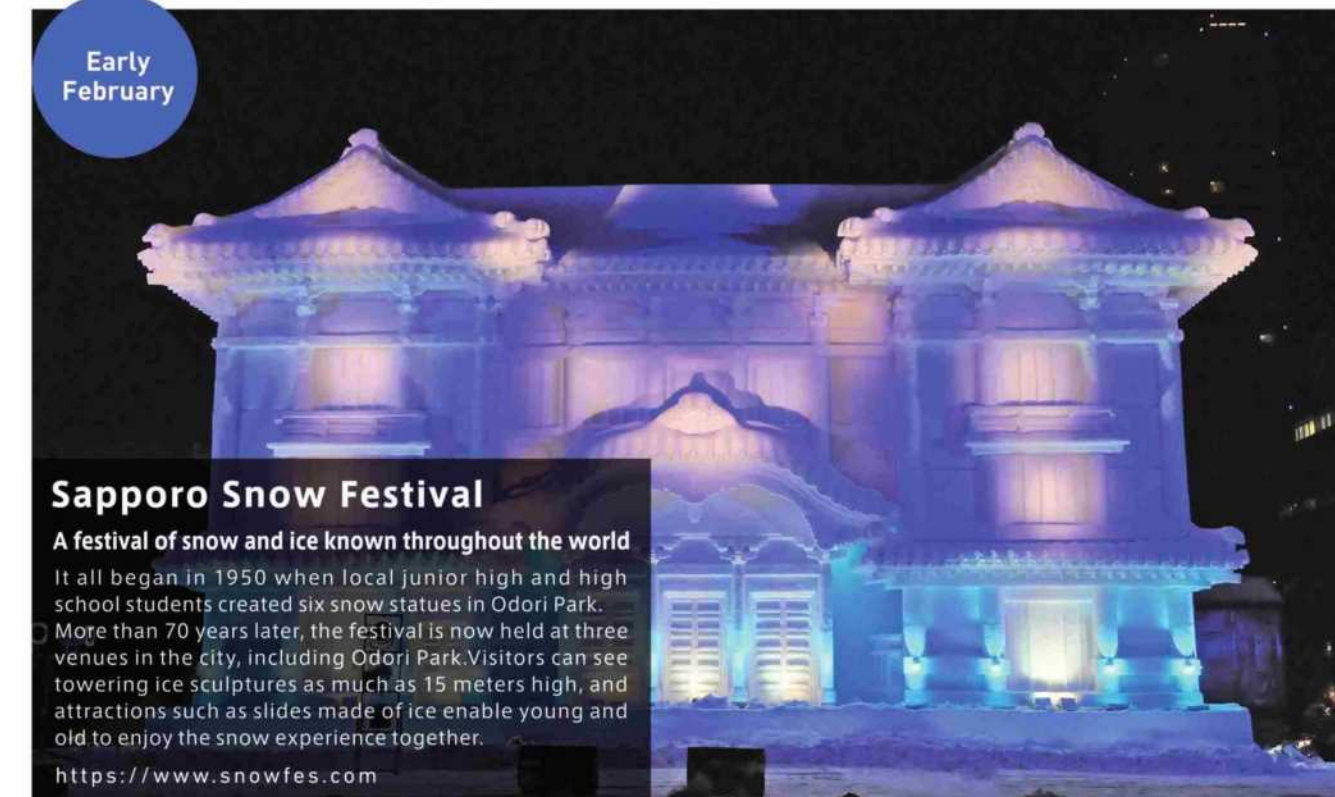
Candlelight adorns Jozankei

In Jozankei Onsen, which is sometimes referred to as Sapporo's sitting room, a snow candle event is held at Jozankei Shrine. Around 2,000 snow candles, made by local residents packing buckets with snow, adorn the grounds of the shrine creating a magical lightscape. The photogenic heart-shaped spot is particularly popular.

<https://jozankei.jp/about/>

## Experience famous winter events

The city of Sapporo has many famous winter events that are only held for a limited period of time. Sapporo Snow Festival in particular, which could even be called a winter tradition now, is so popular that it attracts around 2.5 million visitors from Japan and overseas. We recommend a visit to revel in this unique Sapporo winter sight of beautiful ice carvings and massive snow sculptures in the crystal-clear cold air.



### Susukino Ice World

Experience the fun of joining in

Around 60 ice sculptures are lined up on display at the Sapporo Snow Festival Susukino Site, and their transparent beauty captivates all eyes. Some of them are unique sculptures incorporating hair crabs and fish. With attractions such as an ice carving performance area and ice bars, this is an event where you can enjoy the fun of being a participant, not just an observer.

<https://www.snowfes.com>



### Sapporo Snow Festival Tsudome Site

A place where children and grown-ups can enjoy playing in the snow

Tsudome is a sport facility in Sapporo's Higashi Ward. This venue offers many attractions, including ice sliders and snow rafting. Be sure to come along in skiwear so that you can enjoy the snow to the full. There are rest areas and food stalls etc. inside the facility.

<https://www.snowfes.com>



# Apres Ski — DAY Plan

## Sightseeing in the city on days you don't ski

Sapporo is so attractive because there are many things to do, such as sightseeing, when you are not skiing. We have come up with suggestions for days when you don't feel like going to a ski ground.

Sapporo in winter has many tourist attractions apart from skiing and snowboarding. In addition to city tourism such as dining and shopping, there are many places where you can experience snow activities if you head a little further afield. Here we suggest a one-day plan for lots of fun in the city and in the great outdoors. Miso ramen has to be Sapporo's most famous local delicacy. Each shop offers its own distinctive flavor, with ingredients such as buttered sweetcorn and chili pepper added to the basic rich miso soup and medium-thickness curly noodles that Sapporo pioneered. Once you've eaten your fill, try out an activity in a snow spot fairly near to the city center. For dinner, savor Genghis Khan and beer at a popular tourist spot, and then finish off with a sweet dessert.



## Fortify yourself with a meal before going sightseeing in the city

### Soup curry

An original Sapporo dish, soup curry is rice steeped in a smooth, spicy soup-like curry. There is a wide range of flavor variations, from light to rich. Each shop has its own special soup, and adds a dynamic topping such as fresh Hokkaido vegetables and chicken on the bone, making it look really special.

## Look, listen and touch to experience nature and the city



Equipment such as snowshoes and cross-country skis can be rented at Moerenuma Park, which was designed by the architect Isamu Noguchi.



At Snow Square next to Sapporo Dome you can enjoy fun activities such as snow rafting, sledding and tube sledding.



You can visit sights such as the Great Buddha Hall designed by the architect Tadao Ando at Makomanai Takino Cemetery.



Have fun choosing presents from Hokkaido such as crabs and scallops at the stalls outside Sapporo Central Wholesale Market



## A confectionery-based theme park that enfolds visitors in a sweet and joyful mood

### You can observe how Shiroi Koibito, the famed Sapporo sweet, is made

Shiroi Koibito Park is a popular tourist spot whose attractions include buildings and illuminations that seem to be straight out of a fairy tale, and the chance to try your hand at making confectionery.

## After some exercise, dine somewhere with an authentic Sapporo atmosphere

Step 4

### Enjoy beer and Genghis Khan in a historic building

Sapporo Beer Museum is housed in a Meiji era building that has been left just as it was. It is a popular tourist attraction with many photogenic spots. There is also a tour tracing the history of Japanese beer. There are popular set menus in the adjoining Sapporo Beer Garden where you can have all the Genghis Khan you can eat, and all the draft beer you can drink (this includes a variety of beers).







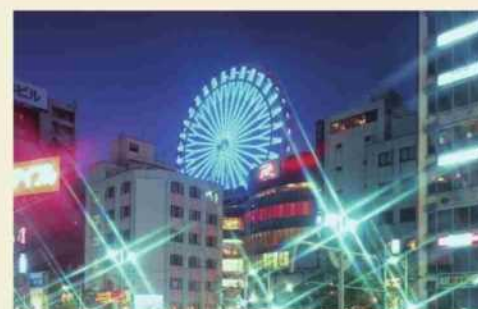
## Apres Ski

# NIGHT Plan

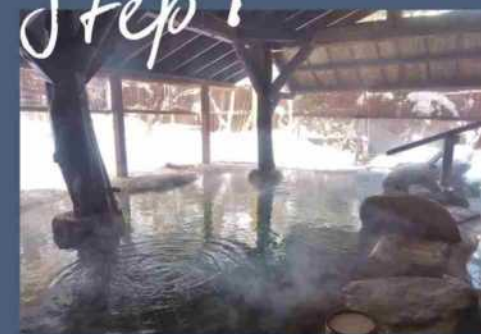
### The all-important après ski!?

The close proximity of the downtown area and the ski grounds makes Sapporo a city where you can easily enjoy both. It won't be hard to enjoy Sapporo's nighttime tourist attractions after you've finished skiing.

The best way to have fun in Sapporo in winter is to enjoy skiing or snowboarding during the day, and the city's tourist attractions from the evening onwards. After soaking your weary bones in a hot spring when you've finished skiing, down a nice cold beer or two while feasting on Sapporo's culinary delights. If you have the opportunity, take a look at the night view of Sapporo, one of the New Three Most Beautiful Nightscapes of Japan. The night's sightseeing begins in earnest when you are back in the city center. Head out for northern nightlife district of Susukino and let yourself be intoxicated by the night and the good food on your trip. The day has to be rounded off by Sapporo's new nighttime standard: "Shime-parfait."



## Step 1



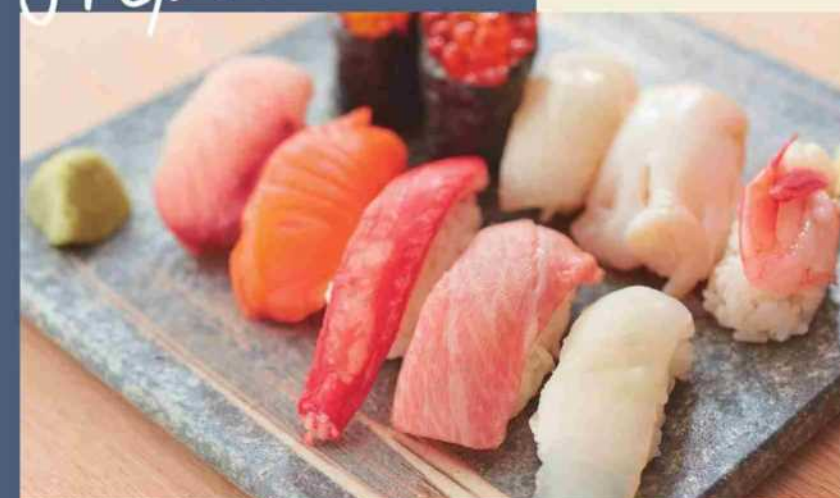
### Warm yourself up in a hot spring after skiing

**Sapporo may be a big city but it's easy to enjoy a hot spring**

Jozankei Onsen, one of the best hot springs in Hokkaido, is about an hour's drive from the city center. It takes less than 30 minutes to go there directly from Fu's Snow Area or Sapporo Kokusai Ski Resort. There are plenty of options downtown as well, such as hot spring facilities offering stone saunas and beauty treatments, and spas on the top floor of a hotel where you can enjoy the view as you bathe.



## Step 2



### Once you've washed away your fatigue, feast on typical Sapporo food

Fresh seafood from the Pacific Ocean, the Sea of Japan and the Sea of Okhotsk are brought together in Sapporo, and there are a wide variety of restaurants, ranging from high-class sushi bars to casual conveyor belt sushi shops.

### Enjoy your fill of the gourmet paradise that is Sapporo

Genghis Khan is a local Hokkaido dish where you can enjoy lamb cooked with vegetables in a special pot with a raised mound in its center.

## Step 3



### The Mt. Moiwa Ropeway is near the heart of the city

Mt. Moiwa (altitude 531 m) is located almost in the center of Sapporo. Take the ropeway and then the mini cable car to enjoy a panoramic view of the Sapporo cityscape from the summit.

## Step 4

### Have fun in Susukino, one of the top three nightlife districts in Japan



Susukino is the place to go for a fun-filled evening after you've skied. Susukino Crossing with its brilliant neon signs is famous as a photogenic spot. This district has a very low crime rate, and there are a variety of clubs and bars with excellent atmospheres where you can enjoy music and drinks.

### And after a few drinks, you round off the evening with an ice cream parfait, right?!

Hokkaido is well-known for produce that is used to make confectionery, such as milk, butter and other dairy products, as well as flour and adzuki beans, so it boasts plenty of sweets that make abundant use of very fresh, high-quality ingredients. It is becoming customary in Sapporo, in particular, to finish off with a cold, sweet ice cream parfait after having a few drinks, regardless of which season it is.







# APRES SKI

## SAPPORO Japan

**Enjoy urban tourism and  
excellent food along with  
skiing and snowboarding**

"Après ski" means "after skiing." The culture of enjoying drinks and good food after skiing is well-established in European and North American ski resorts. Sapporo truly is a city where you can fully enjoy this "après ski." Its six ski grounds can all be accessed within around one hour from the downtown area, so you can go skiing during the day and explore the city in the evening, or do it the other way round. Sapporo's unique appeal is how easy it is to enjoy après ski in this city that coexists with nature. It goes without saying that people not into winter sports will of course find plenty to enjoy here as well. When you come to Sapporo, be sure to make the most of all the unique experiences it offers, as well as the winter sports.

